

# Protection you can count on

Certified by NIOSH

# N95

## ASTM Level 1

Solid aerosol filter efficiency	≥ 95%
BFE	≥ 95%
PFE at 0.1 µm	≥ 95%
Synthetic blood resistance	@80 mm Hg
Differential pressure (ΔP)	< 5.0 mm H <sub>2</sub> O/cm <sup>2</sup>
Flame spread	Class 1



**Ideal when treating patients with known or suspected aerosol transmissible diseases:**

- Coronavirus
- Tuberculosis
- Rubeola

ASTM  
LEVEL

# 3

BFE	≥ 98%
PFE at 0.1 µm	≥ 98%
High fluid resistance	@160 mm Hg
Differential pressure (ΔP)	< 6.0 mm H <sub>2</sub> O/cm <sup>2</sup>
Flame spread	Class 1



**Ideal for procedures with high risk of spray or aerosols:**

- Surgery
- Major trauma first aid
- Using laser devices

ASTM  
LEVEL

# 2

BFE	≥ 98%
PFE at 0.1 µm	≥ 98%
High fluid resistance	@120 mm Hg
Differential pressure (ΔP)	< 6.0 mm H <sub>2</sub> O/cm <sup>2</sup>
Flame spread	Class 1



**Ideal for procedures with medium risk of spray or aerosols:**

- Emergency room
- Changing dressings
- Lab work with exposure to blood

ASTM  
LEVEL

# 1

BFE	≥ 95%
PFE at 0.1 µm	≥ 95%
High fluid resistance	@80 mm Hg
Differential pressure (ΔP)	< 5.0 mm H <sub>2</sub> O/cm <sup>2</sup>
Flame spread	Class 1

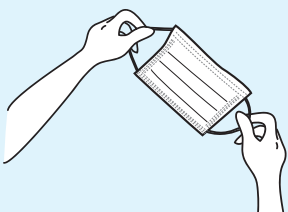


**Ideal for procedures with low risk of spray or aerosols:**

- Low-risk exams
- Operatory cleaning/maintenance
- X-rays

## DONNING A PROCEDURE MASK

1. Colour on the outside



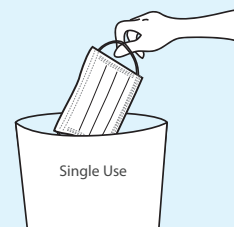
2. Adjust over mouth and nose



3. Secure earloops over each ear



4. Safely dispose of used masks



# Components of a Procedure Mask

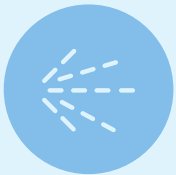
Medicom is proud to offer a broad range of high-quality procedure masks that provide healthcare professionals with reliable protection without compromising **comfort** or **breathability**.

7 features that set our masks apart:

- ① **Non-woven spunbond outer layer** provides maximum protection against fluid penetration.
- ② **High quality media** for optimal filtration and breathability.
- ③ Non-woven spunbound polypropylene **inner layer** is made of dye-free material that will not lint or tear during usage.
- ④ Ample length **earloops** are soft, strong, ultrasonically sealed and attached to the outside of the mask to prevent pulling and irritation.
- ⑤ Adjustable, extra-long, **enclosed aluminum nose piece** forms a strong seal to provide customized protection and comfort.
- ⑥ **Shingle pleat design** prevents fluid pooling and cross contamination. Masks should be worn with pleats facing down.
- ⑦ **Soft-bond ultrasonics** ensure solid construction and eliminate holes and defects.



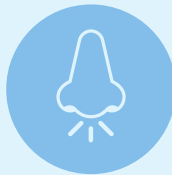
## WHAT DO MASKS PROTECT AGAINST?



Sprays



Splashes



Aerosolized  
body fluids



Potentially infectious  
materials

Which may be  
transmitted during  
routine procedures.

ASTM Requirements	ASTM LEVEL 1	ASTM LEVEL 2	ASTM LEVEL 3
Bacterial filtration efficiency (BFE)	≥ 95%	≥ 98%	≥ 98%
Sub-micron particulate efficiency at 0.1 µm (PFE)	≥ 95%	≥ 98%	≥ 98%
Resistant to penetration by synthetic blood	@80 mm Hg	@120 mm Hg	@160 mm Hg
Differential pressure (ΔP)	< 5.0 mm H <sub>2</sub> O/cm <sup>2</sup>	< 6.0 mm H <sub>2</sub> O/cm <sup>2</sup>	< 6.0 mm H <sub>2</sub> O/cm <sup>2</sup>
Flame spread	Class 1	Class 1	Class 1